



AMDW Facts

Ticker

Price return: AMDW
Total return: AMDWT
Net total return: AMDWN

Bloomberg

Price return: AMDW
Total return: AMDWT
Net total return: AMDWN

Index Launch

January 20, 2020

Base Value

100 on October 17, 2014

Index Calculation

Every fifteen (15) seconds

Reconstitution Date

Every third Friday of October

Rebalancing Dates

Every third Friday of January, April, July, and October

Index Rules

Available at alerman.com

Portfolio Characteristics

Number of Companies: 17

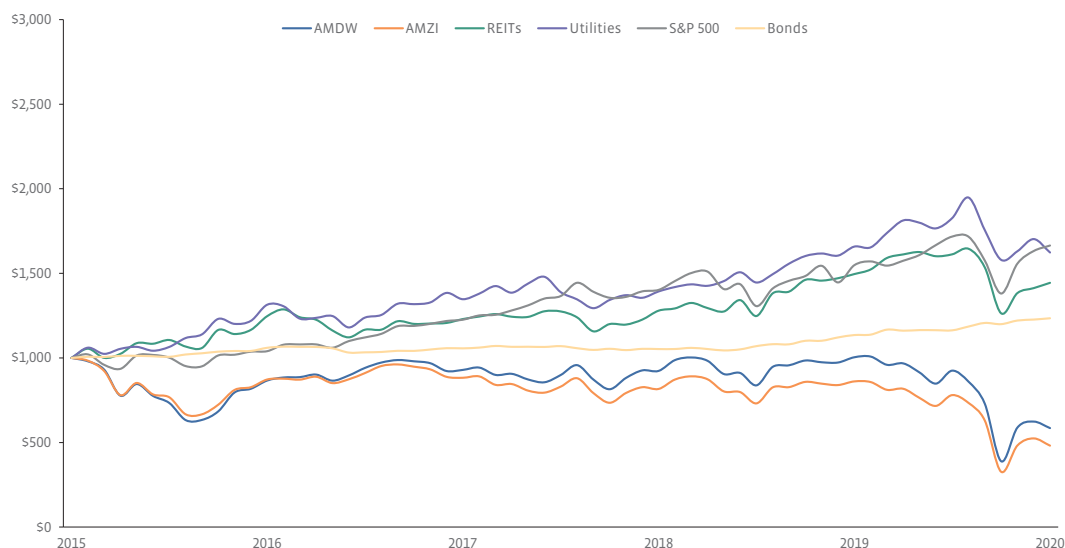
Company Size by Market Capitalization (millions)

Average	\$7,814
Median	\$2,862
Largest	\$39,774
Smallest	\$499

% Investment Grade: 64.7%

The Alerian MLP Infrastructure Dividend Index is a fundamentally-weighted index based on the liquid, dividend-paying portion of the energy infrastructure Master Limited Partnership (MLP) market. The capped, dividend-weighted index, reflects the proportionate share of aggregate annual cash distributions each company is expected to pay.

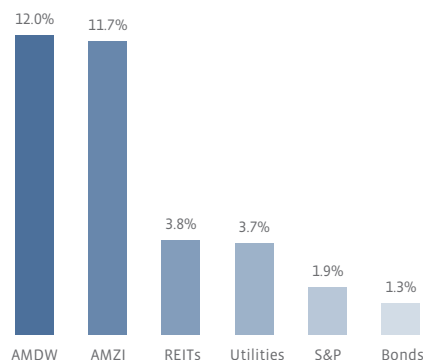
5-Year Performance value of \$1,000 invested



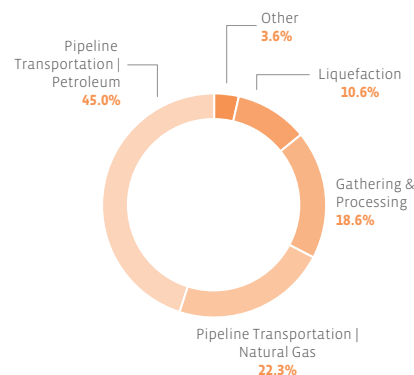
Performance Data

	3 Month	6 Month	YTD	Annualized		
				1 Year	3 Year	5 Year
AMDW	50.3%	-36.7%	-36.7%	-41.7%	-14.3%	-10.2%
AMZI	47.2%	-38.3%	-38.3%	-44.1%	-18.3%	-13.6%
REITs	14.3%	-10.4%	-10.4%	-3.5%	5.5%	7.6%
Utilities	2.7%	-11.1%	-11.1%	-2.1%	6.4%	10.2%
S&P 500	20.5%	-3.1%	-3.1%	7.5%	10.7%	10.7%
Bonds	2.9%	6.1%	6.1%	8.7%	5.3%	4.3%

Yields



Sector Weightings





Market Capitalization

AMDW Index Market Cap

\$78 Billion (51%)

Total Energy Infrastructure MLP Market Cap

\$154 Billion

Comparable Market Indices

	AMDW	AMZI	REITs	Utilities	S&P 500	Bonds
Correlation to AMDW	1.00	1.00	0.75	0.47	0.79	0.18
Value of \$1,000	\$585	\$481	\$1,444	\$1,623	\$1,665	\$1,235
% Positive Months	53.3%	46.7%	61.7%	63.3%	75.0%	63.3%
Standard Deviation	38.2%	37.2%	15.5%	13.5%	14.8%	3.1%
Sharpe Ratio	-0.11	-0.22	0.48	0.70	0.69	1.03

Top 10 Constituents

Company Name	Sector	Ticker	Market Cap (millions)	Index Weight	Yield
MPLX LP	Pipeline Transportation Petroleum	MPLX	\$18,288	11.8%	15.9%
Cheniere Energy Partners LP	Liquefaction	CQP	\$12,195	10.6%	7.3%
Energy Transfer LP	Pipeline Transportation Natural Gas	ET	\$19,090	10.3%	17.1%
Enterprise Product Partners LP	Pipeline Transportation Natural Gas	EPD	\$39,774	9.3%	9.8%
Magellan Midstream Partners	Pipeline Transportation Petroleum	MMP	\$9,860	9.3%	9.5%
Plains All American Pipeline LP	Pipeline Transportation Petroleum	PAA	\$6,436	8.7%	8.1%
Western Midstream Partners, LP	Gathering & Processing	WES	\$4,548	8.5%	12.4%
Phillips 66 Partners LP	Pipeline Transportation Petroleum	PSXP	\$8,202	8.3%	9.7%
Enable Midstream Partners LP	Gathering & Processing	ENBL	\$2,037	4.4%	14.1%
Shell Midstream Partners LP	Pipeline Transportation Petroleum	SHLX	\$2,862	4.2%	15.0%
Total			\$123,292	85.4%	

About Alerian

Alerian is an independent information services company serving asset managers and investment professionals around the globe through its indexing, research and data capabilities. Built on a foundation of data rigor and specialty research, Alerian pioneered how the master limited partnership (MLP) asset class is measured and created the first real-time MLP index – the Alerian MLP Index – the most widely used benchmark for midstream MLP energy. Today, Alerian continues to innovate, delivering indexes, tools, thought leadership, and actionable insights that equip stakeholders to make informed decisions.

It is not possible to invest directly in an index. Index performance does not reflect the deduction of any fees or expenses. Alerian does not sponsor, endorse, sell, or promote any investment product linked to or based on the Alerian Index Series. Utilities are represented by the S&P 500 Utilities Index, a composite of utility stocks in the S&P 500. Real Estate Investment Trusts (REITs) are represented by the Real Estate 50 Index, a supplemental benchmark to the FTSE NAREIT US Real Estate Index Series to measure the performance of larger and more frequently traded equity REITs. The S&P 500 is a capitalization-weighted index of 500 stocks designed to measure performance of the broad domestic economy. Bonds are represented by the Barclays US Aggregate Total Return Bond Index. Performance is provided on a total return basis. Correlation is based on monthly data over the trailing 3-year period. Percentage of positive months, standard deviation, value of \$1,000, and Sharpe ratio comparisons are based on monthly data over the trailing 5-year period. For sector weighting purposes, constituents are classified according to the business in which they generate the most distributable cash flow. The Alerian North American Midstream Energy Index is the exclusive property of Alerian, which has contracted with Standard & Poors ("S&P") to maintain and calculate the Index. Further, S&P Dow Jones Indices LLC (SPDJ) is the "Benchmark Administrator" for the index (as defined in the International Organization of Securities Commission Principles for Financial Benchmarks of July 2013 and ESMA/EBA Principles from Benchmark Setting Processes of June 6, 2013). Neither S&P nor SPDJI shall have any liability for any errors or omissions in calculating the Index.